



# St Mark's School Newsletter

Term 1 Week 10  
7 April 2022

## Kia ora Te Kura o Hato Māka whānau

After popping into every classroom this morning, I now sit here with the rain beating down on the roof and the heat pump on low. What a privilege compared with so many. The Five Marks of Mission call us to: tell, teach, tend, transform and treasure in Christ's name - all integral to mission ensuring us that we look outward to others.

## Managing ākongā health

We are continuing with our communications of Covid-19 cases in our school to the community and classes. If there are no communications for your class it means there are no new cases in your child's class. We have been diligent in ensuring you receive the information we have, and have been so grateful our staffing levels have remained high.

## Gifted Education

"Gifted Education" programs are required by the Ministry of Education of all schools, kura and learning centres. You will find information on the MOE website. The form of these programs are to be localised - that is in Aotearoa, schools - ALWAYS using evidence and research - build programs in their community.

At St Mark's School we have an unequivocal position that all students have God given gifts and talents, strengths and attributes.

We seek ways to give flight to these through specialist science, sport, art, drama, dance, PE, environmental science, Te Reo as well as core curriculum programs, accepting that for some students some of their individual talents will be expressed outside St Mark's School e.g. dancing, football, karate, fencing, instrumental music or speed skating.

We seek opportunities to celebrate every child.

Our MODS pilot is a response to the Ministry of Education imperatives and sits parallel to our other programs of acceleration, extension and differentiation. It is in response to research that indicates advanced curriculum adaptation is required for some students to reach their full potential. The pilot has been running since 2020 but has been severely hampered by the arrival of the pandemic. **Miss Cristy Yonetani** has been working with a wide range of students over this time to gather evidence and data that meets international research and tailor a program to our school.

Open community forums and consultation, surveys, questionnaires, whānau hui and lately zoom meetings have seen extensive data gathered.

If you have not been able to take part in any of these opportunities there is a wealth of information on our website.

Ultimately I am responsible for any communications and take responsibility for any gaps in our collective understandings. Thank you to those who have already reached out in comment to Cristy's recent communication.

After some further work in Term 2, the findings will be presented to the Board of Trustees for discussion and ratification.

Look out for a further time to connect in Term 2 - hopefully in person!!!

## And in other news...!!

- Chess is happening in Mōkihi! **Theo C** and **Cody M** are experts at age 5!!!
- Mr Rennie should never play conkers!
- Mrs Worner stole Miss Bryant's car park today.
- Sir Ian Taylor's **Mātauranga** is a must site to visit.

**Mātauranga - What's New -  
Ake Mai - Jump Aboard**

## Dates for your calendar - a reminder

- The last day of Term 1 is **Thursday 14th April**.
- Teacher only day **Monday 2nd May**
- **Tuesday 3rd May** - students return to school for Term 2

This morning **Rev. Ben** and I shared a coffee and talked about the opening of St Mark's Church. After many months of planning, our wonderful extended whānau in the parish will soon return to their local home. It will once again be home to our school. Our prayers go to **Rev. Ben** and the parish community as they prepare for this wonderful day  
Averil and Staff



*Transforming lives through the St Mark's Story*

Phoebe took home the player of the year trophy for the 2021/22 season of her u11 Richmond keas softball team.



Congratulations to Dustin S who has been selected for the Canterbury team for flag football!! He also won the Rookie of the Year award. Well done Dustin.



Congratulations to Eli D who won the Most Improved award for his cricket team this season.



Congratulations to Lemarle D-A, Madeleine J, Henry B, Eli M, Alice A and Theo T who have gained their level one 'pawn' badge so far this year.

Congratulations to Ariki E for getting his level two 'knight' badge too.

In spite on not being able to celebrate these in the customary way with the restrictions on meeting as a school, but their achievements have been celebrated in their classrooms each week. Well done to them all!



The Community Dental Service will be providing urgent and relief of pain appointments during the school break at:

**Aranui Community Dental Clinic, 240 Breezes Road, Christchurch - Hornby Community Dental Clinic, 2 Hei Hei Road, Christchurch**

You can access these appointments by calling our Contact Centre on **0800 846 983**. For any dental advice please call the Contact Centre on **0800 846 983** or email [commndental@cdhb.health.nz](mailto:commndental@cdhb.health.nz)

# PARENTS' ASSOCIATION AGM

On Tuesday 10<sup>th</sup> May at 7.00pm in the School Hall

Due to the Covid Protection Framework (Traffic Light System) we were unable to start the school year as we normally do with our annual Welcome Back BBQ and then the P.A. AGM the following week.

Now that restrictions on gatherings, meetings are being relaxed we are confident to be able hold our annual AGM early in term 2.

All families of St Mark's School are automatically members of the St Mark's School Parents' Association. The P.A. is administered by a Board (committee) of parents who hold various positions and responsibilities to ensure the effective and efficient running of the communities' social activities, such as the Welcome Back BBQ, School Disco, Grandparents Day, New Entrants Evening, Year 8 Leavers Dinner. Parents also volunteer and donate their time on the Coffee Cart and the Uniform Shop.

The Parents' Association is A GREAT way to get involved in helping to organize the social aspects of school life and to assist with our FUNraising efforts that help to provide the nice to have extras for our children at St Mark's School.

We invite new parents to come along and see how you can get involved. This year we are especially seeking someone to take on the role of Treasurer, someone who knows their way around Xero and can maintain our accounts payments, tracking and books, please feel free to contact me to discuss if this is something you can help/contribute too within the school community.

The Board consist of a Chairperson, Secretary and Treasurer (these 3 positions are nominated by the parent community and voted upon by the members present at the AGM) there is a Teachers Representative, The Principal and then eight other members who are nominated by the parent community (voting for committee places only takes place if there are more nominees than places available)

Nomination forms for positions for this year's P.A. Board will be circulated to all families next week with a return date no later than April 12<sup>th</sup>. (Prior to the term break)

We look forward to seeing as many of you as possible on May 10<sup>th</sup>.

Gary Miller  
Chairman  
St Mark's Parents' Association





## Kia ora St Mark's School Family,

For my Postgraduate Diploma in Specialist Teaching, I am researching the equity and effectiveness of IEPs in Ōtautahi Christchurch. I would be so grateful if you could fill in this quick survey to share your perspective on the IEP process.

Please share this link with any families or educators who might be interested: [bit.ly/CHCHIEP](https://bit.ly/CHCHIEP)

Thanks for your support!



**Cristy Yonetani**

Kaiako Pūmanawa | Specialist Teacher Gifted

The Individual Education Plan is a valuable and effective tool that actively seeks to support or provide enrichment for individual students, for whom it is relevant in our classrooms. Bringing together the perspective of both home and school for each child in their learning journey.

The greater the collection and analysis of these plans, the more concise the feedback that can be gathered to help improve the process and outcomes for our precious learners.



**Liz Coster**

SENCo

(Special Educational Needs Coordinator)



## Have Your Say: Individual Education Plans (IEPs) in Ōtautahi Christchurch

The purpose of this survey is to explore the equity and effectiveness of IEPs (Individual Education Plans) for preschool and primary school students in Ōtautahi Christchurch.

We are a team of specialist teachers and postgraduate students, who want to better understand and improve IEPs in our region.

This survey will take approximately 10 minutes to complete and will close on Friday 8 April.

You are welcome to remain anonymous.  
Thank you for your time.



# 2022 Easter Services

Sun 10th April

10am at St Mark's School

Palm Sunday

A combined service including procession with palms and an extended Passion reading.

Mon 11th April

7.30pm at St Mark's School

Monday in Holy Week

Shortened Eucharist with reflection

Tue 12th April

7.30pm at St Mark's School

Tuesday in Holy Week

Shortened Eucharist with reflection

Wed 13<sup>th</sup> April

7.30pm at St Mark's School

Wednesday in Holy Week

Shortened Eucharist with reflection

Thu 14th April

7.30pm at St Mark's School

Maundy Thursday

A service marking the institution of the Lord's Supper. Includes the washing of feet & stripping of the church.

Fri 15th April

9.30am at Opawa Community Church,

Good Friday

Cnr Opawa Rd & Aynsley Terrace. A combined service.

Sat 16th April

8pm at Cathedral

The Great Vigil of Easter

Parishioners are invited to join with the Diocese at the Transitional Cathedral for the Vigil.

Sun 17th April

10am at St Mark's School

Easter Day

A combined service including sung Eucharist, the renewal of Baptismal vows, and the blessing of the Paschal Candle.

# HOPE STARTS HERE

CELEBRATE THE STORY OF EASTER







# ST MARKS

## April School Holidays 2022



Based at St Marks Primary School on Cholmondeley Ave.

8:30am - 3:00pm - \$43.00

8:30am - 6:00pm - \$50.00

7:30am - 3:00pm - \$53.00

7:30am - 6:00pm - \$60.00

\*Trip & Activity Fees extra as advertised

\* Terms & Conditions apply

## WHAT'S ON?



Monday 18th



**EASTER MONDAY**

MASH is closed today in observance of Easter Monday.

Tuesday 19th



**TREASURE HUNT**

Test out your treasure hunting skills with our fun indoor and outdoor challenges.

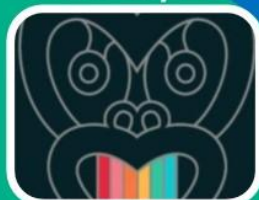
Wednesday 20th



**You Choose:**

A day of heroes or a day at Adrenalin Forest.  
\$30 Trip Fee

Thursday 21st



**TE REO FOR ALL**

Come and learn about our flourishing Māori culture for the day.

Friday 22nd



**ORANA PARK**

Orana Park provides the ultimate animal adventure!  
\$15 Trip Fee

Monday 25th



**ANZAC DAY**

MASH is closed today in observance of ANZAC Day.

Tuesday 26th



**SELF-DEFENCE**

Join us for a fun day of self-defence and learn how to be a great citizen!  
\$15 Activity Fee

Wednesday 27th



**MOVEX**

Enjoy bouncing around and ice skating at MoveX with your mates!  
\$15 Trip Fee

Thursday 28th



**SPORTS BONANZA**

Be ready for indoor and outdoor sports and get ready to compete!

Friday 29th



**PAJAMA PARTY**

Wear your favourite pajamas and have a fun last day of activities!

# MASH

MY AFTER SCHOOL HEADQUARTERS



Book online now to secure your spot!

**MASHKIDS.CO.NZ**

For more information go to our website or

email us at [info@mashkids.co.nz](mailto:info@mashkids.co.nz)